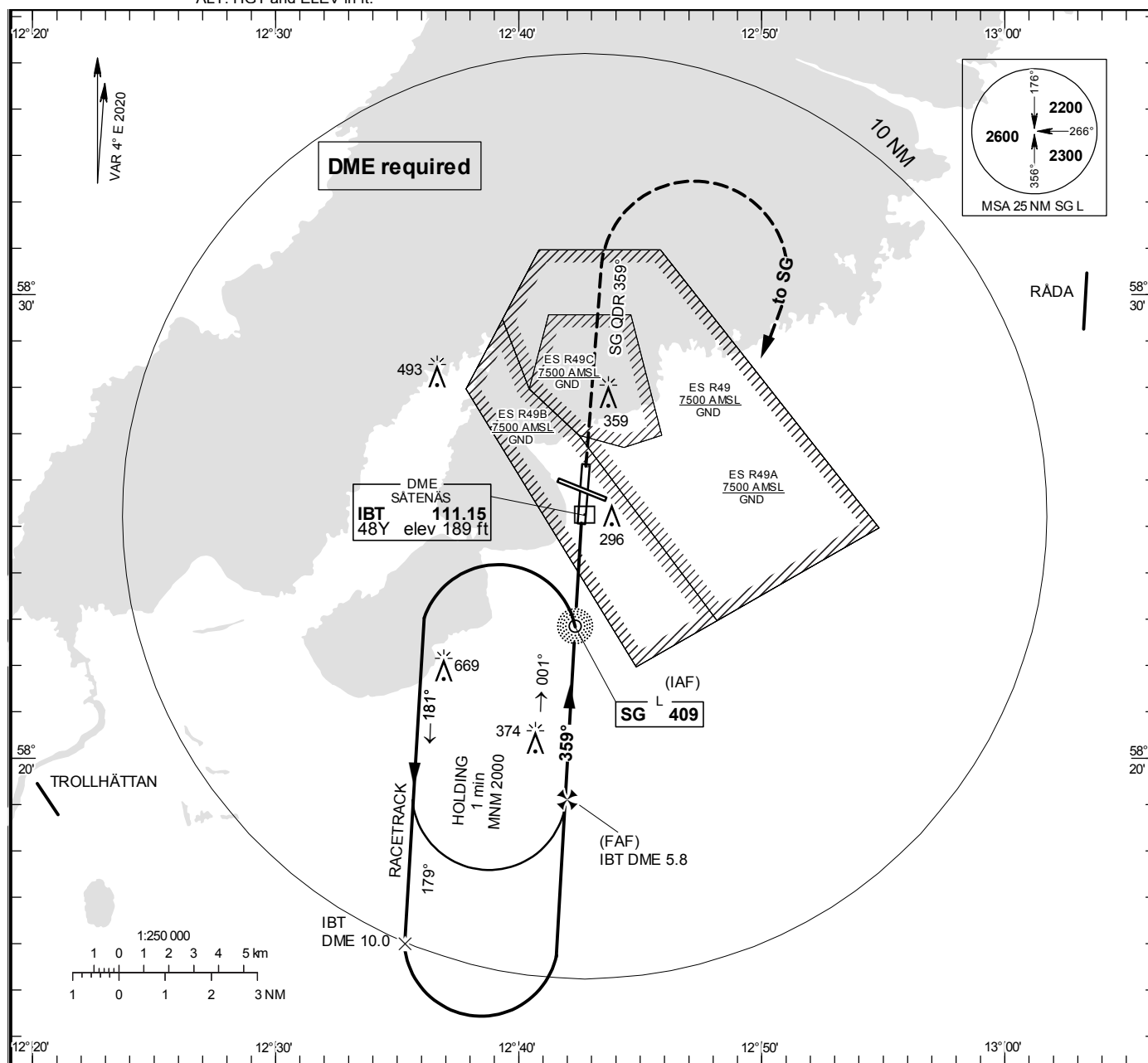


**THR ELEV 169.4 ft, AD ELEV 181 ft**  
 OCH are related to THR.  
 Circling OCH are related to AD ELEV.  
 BRG are MAG  
 ALT, HGT and ELEV in ft.

SÄTENÄS TOWER	128.200
SÄTENÄS APPROACH	134.550

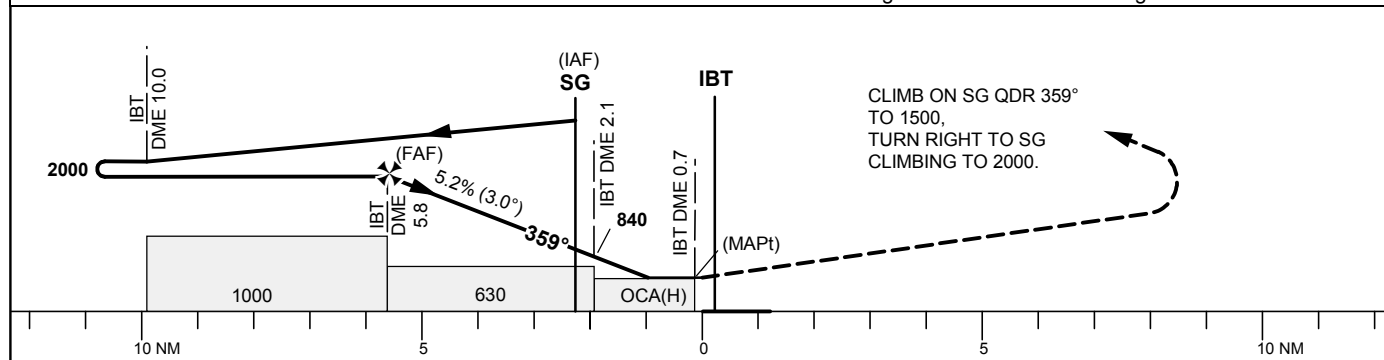
**SÅTENÄS**  
**NDB RWY 01**



TA 5000 ft AMSL

Final track 1° offset

\*Timing not authorized for defining the MAPt



OCA (H)					Final approach	Distance FAF-MAPt 5.1 NM*							
Cat of ACFT	A	B	C	D	DME IBT NM	5		4		3		2	
					ALT	1760		1440		1130		810	
Straight-in Approach	530 (370)				GS	kt	80	100	120	140	160	180	
					Time	min:s	3:47	3:02	2:32	2:10	1:54	1:41	
Circling	660 (480)	660 (480)	890 (710)	1070 (890)	Rate of descent	ft/min	425	530	635	745	850	955	

LFV